



# HIGHLEY SCHOOL BULLETIN

## THIS WEEK'S ATTENDANCE

**93.63%**

## UPCOMING EVENTS

18th March - Y3 Pentabus Rehearsal & Performance

18th March - Y5 Lacon Childe Taster Day

19th - 21st March - Y4 Pioneer Residential Trip

20th - 21st Biscuit Sale

21st March - Red Nose Day Fundraiser

25th March - KSI X Country - Idsall School

26th & 27th March - Mothers Day Sale

31st March - 4th April - DT Week

8th April - KSI X Country - OWS

14th - 25th April - Easter Holidays

28th April - PD Day - School Closed

## AFTER SCHOOL CLUBS

Coming Soon

## SCHOOL LUNCHES

W/C 17th March

Week 2 Menu

## SOCIAL MEDIA

Twitter @highley\_school

Facebook @highleyprimary

Instagram @highleyschool

[School App](#)

## 14TH MARCH 2025 MESSAGE FROM MR PLIM

Dear Parents and Carers,

It has been great to see so many of you attending Parents' Evenings this week, in fact 90% of parents had appointments booked. If you were not able to make it or had to cancel on the day, please talk to class teachers so that something else can be arranged.

The Scholastic Book Fair once again was incredibly successful - we know you have a choice of where to buy books for your children, but the difference is when you buy from the Book Fair, we also get books for school! Astonishingly, you spent £1600 on books for your children, which meant that school received £967 back in commission from Scholastic to spend on brand new books for school. This has meant that every class in school has been able to spend £96.70 on new books for their classrooms - which have been chosen and have already arrived in book corners in the classroom!

3 children were picked out of a raffle to receive a book voucher and I am delighted to share that Henry from Cleve, Jack from Ironbridge and Amelia from Severn were picked out! Enjoy your new books!

If your child is in Severn or Arley, Miss Cash and Miss Stoker have been student teachers over the last few weeks; both of whom have finished and passed their placements this week. For both of them, this was their final placement as part of their training and as such, they are now fully fledged & qualified primary school teachers! This also means that this time next year, they will be over halfway through their first year in front of their own class group! Miss Cash and Miss Stoker have slotted into our school team wonderfully well and we have loved having them both here, what has impressed me is their willingness to just 'get involved' in anything going on in the wider life of school. So, we are sad to say goodbye today but we want to take the opportunity to say 'thank you' and to wish them the very best for their future careers.

If your child is in Year 3 and you have bought tickets to Ludlow Assembly Rooms on Tuesday evening, you really are in for a treat! Year 3 children will be performing with other children from Shropshire primary schools in 'Gwendol: A Giant Problem' at 4:30pm and 6:00pm. I looked this morning, and there are still tickets for the 4:30pm performance available on the [Ludlow Assembly Rooms website](#).

Wishing you all a good weekend

Mr Plim

## TTRS ROCK HEROES



**ROMAN**



**CHARLIE H**



**TOMMY**



# Focus On SEND

At Parents' Evenings this week, I was really pleased to chat with Rachel from Early Help and to discuss how they can help to make a real difference for the families of children with SEND.

## What is Early Help?

Early Help is a proactive approach designed to support children, young people, and their families at the earliest opportunity when challenges arise. By intervening early, we can help prevent issues from escalating and improve outcomes for those with special educational needs and disabilities (SEND).

## Why is Early Help Important for Children with SEND?

Children with SEND may face additional barriers that require targeted support. Early Help can:

- ✓ Identify concerns before they worsen.
- ✓ Provide tailored support for educational, social, and emotional development.
- ✓ Build family resilience and improve overall well-being.
- ✓ Enhance partnerships between families, schools, and services.

Early Help can help families in so many ways. Please get in touch with Miss Francis if you would like more information. We both meet fortnightly to ensure that our SEND and Pastoral roles are as



# Focus On SEND

## Calm Class and Sunshine Room Update

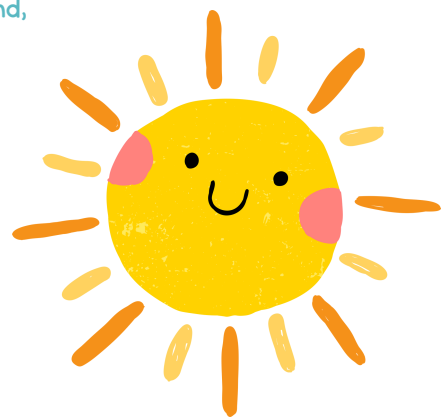
This week I met with some of our Calm Class staff to see if we could make this provision even more effective for some of our children with Social, Emotional and Mental Health needs. We discussed ways to improve our children's understanding of social skills, the importance of building friendships and teamwork, the children who 'drop in' for a catch up or bring themselves in to avoid poor choices outside as well as any other needs that emerge on a week to week basis. We are pleased that some of the children are really enjoying spending time with our guinea pigs, Lola and Dotty too!

## Speech and Language update

I also met with members of staff who deliver speech interventions on a daily basis across our school. In EYFS, various children are discussed and there is close liaison with these staff, Mrs Cook, Mrs Poppleton and Miss Birch. It was really encouraging to hear staff share their experience and to offer advice to one another on the best ways to help our children to improve. After a busy week with Parents' Evening and SEND meetings, I am really looking forward to the weekend!

Have a lovely weekend,

Mrs Williams



# A Quick Guide To Head Lice

## Symptoms & Detection

The main symptom is an itchy scalp. Children may hardly notice head lice or may have only minor scalp irritation.



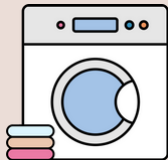
Move a fine tooth comb through wet hair from the scalp outward. Lice are usually found at the back of the head or behind the ears.

Eggs (or nits) are oval-shaped, greyish white and can be seen firmly stuck to the base of hair shafts. They are easier to see because they greatly outnumber lice.

## Care

Use a special shampoo, cream or lotion to kill the lice eggs. To get rid of them, use a fine tooth comb to carefully pick them out.

Wash your bedding and clothes in hot water. These items should probably be dried in a drying machine that reaches 54 degrees Celsius for about 30 minutes.



## Transmission

Headlice are most common among children aged 5-11, but can affect almost anyone. The infestation is spread by close personal contact and possibly by shared combs, brushes, hats and other personal items.

# Stars of the Week

## Clee

Olivia is our star in Clee for engaging in her learning and showing lots of enthusiasm. All the adults have noticed this week, how much effort she is putting in. Well done, keep it up!

## Miners

Miners star this week is Gracie-Mae! This star award is for her resilience as she has been working so hard to improve her skills, particularly in English and Maths. Her consistent effort and determination have not only helped her overcome challenges but we have seen measurable progress in both subjects. She has such a positive attitude to her learning and is always cheerful, well done, Gracie-Mae for giving your best effort every time.

## Arley

Arley's star of the week is Zander! This week, he wrote an amazing hot write about our trip to Ludlow Castle, which he worked so hard on to sound out, along with his kinetic letters! He has also been coming up with some great ideas for our non-fiction books, we are writing about castles and really trying hard on his targets in his writing! Well done Zander, we are super proud! Keep up the good work!

## Netherton

Harry is the star in Netherton class this week! He has really impressed us this week with his fantastic reading and comprehension score, coming out at reading at the same level as a 9 year old!! Absolutely amazing! It shows that all your hard work of reading at home and in school has paid off! Also we have spotted how hard you are working in writing with making your sentences nice and clear and making sure all our punctuation is in the right place! Well done Harry, keep smashing it! :)

## Station

Station's star of the week is Ellis. You have settled into our class and Highley school so well - it's like you've always been here! You always work hard, and you have made some great friendships. We're so happy to have you in Station class. Well done, Ellis!

## KS1 Attendance Bear



## Netherton

# Stars of the Week

## Hazelwells

Our star in Hazelwells is Luke! Luke is such a jolly soul and a ray of sunshine! He makes us smile daily and is a joy to have in class! He is a sponge for knowledge and is always enthusiastic about our topic work.

## Ironbridge

Poppy is our star in Ironbridge class this week because she always works hard, is kind and helpful to others and has a smile on her face whilst she's doing it. Well done Poppy.

## Severn

Grace is the star in Severn for her creative flair in writing. Grace, your use of adventurous language this week has been wonderful. Keep it up- we can't wait to see what you come up with next

## Hitchens

Our star in Hitchens this week is Liam. He has been making much better choices in lessons and Mr Wilkinson and I have been really pleased to see an improvement in his Maths attainment after working with us both this week. He has also done a lovely piece of writing on his imaginary theme park. Keep up with the good choices Liam- they are making a real difference!

## Wrekin

Our star of the week is Brooke. We couldn't name a more worthy recipient for our star! She is a model of maturity and takes her responsibilities as a School Councillor very seriously. Brooke is extremely tolerant of others and a very kind, caring and forgiving child, who genuinely seeks out the best in her peers. Apart from her fantastic personality, she is also a conscientious worker, who deserves to do well in her upcoming SATS! We are sure she has a fantastic future ahead of her. Well done, Brooke!

## KS2 Attendance Trophy Station

